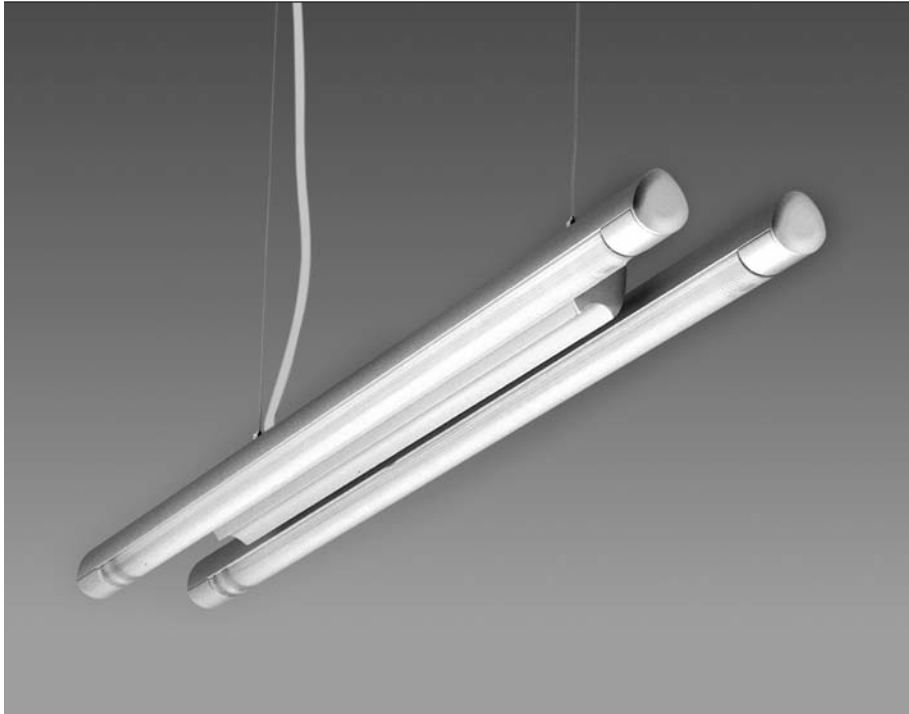


MINIMUS DOUBLE



Catalog Number

FIXTURE
MID – Minimus Double

SHIELDING
BAF – Bladed baffle
ACR – Acrylic lens

VOLTAGE
120 – 120 Volt
277 – 277 Volt

EXAMPLE: MID-BAF-120

Specifications

CONSTRUCTION

Center channel and housing are constructed of extruded aluminum. Endcaps constructed of injection-molded plastic.

FINISH

Luminaires and center channel are both finished in natural aluminum paint, RAL 9006.

SHIELDING

Specify either acrylic lens or vacuum-metalized baffle.

ELECTRICAL

Specify 120 or 277 volt. Fixture and all electrical components are U.L./C.U.L. damp location listed. Supplied with internal electronic ballast.

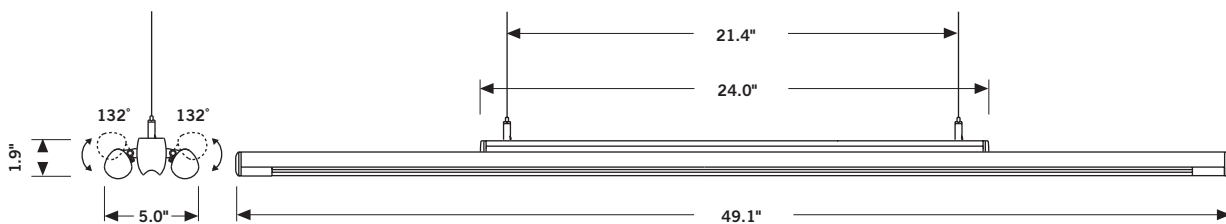
LAMPING

(2) 28 watt T5 fluorescent lamps. Lamps not included.

MOUNTING

Fixture is supplied with a 72" fully adjustable aircraft cable.

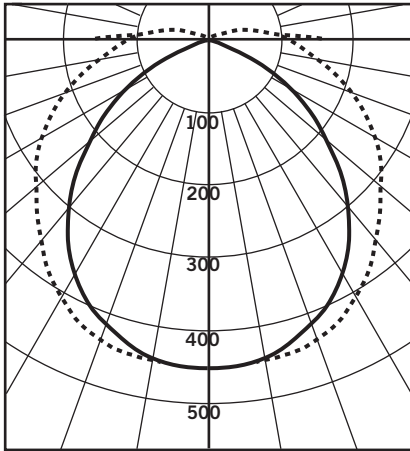
Dimensions



MINIMUS DOUBLE



Photometrics (shown for single channel)



CANDELA DISTRIBUTION

	0	45	90
0	451	451	451
5	451	451	450
15	445	440	432
25	427	416	393
35	387	373	336
45	335	318	262
55	291	254	174
65	240	195	90
75	179	147	29
85	128	107	5
95	87	71	0
105	56	39	0
115	25	15	0
125	9	8	0
135	8	5	1
145	5	3	1
155	2	1	1
165	1	1	1
175	1	1	1
180	1	1	1

LUMINAIRE

Description: Minimus Double with 28 watt T5 lamps and acrylic lens.

Catalog Number: MID-ACR-120

Efficiency: 56.5%

ZONAL LUMEN SUMMARY

ZONE	LUMENS	% LAMP	% FIXT
0 - 30	357.1	12.5	22.2
0 - 40	586.8	20.6	36.4
0 - 60	1042.2	36.6	64.7
60 - 90	426.8	15.0	26.5
0 - 90	1469.0	51.5	91.1
90 - 180	142.7	5.0	8.9
0 - 180	1611.7	56.6	100.0

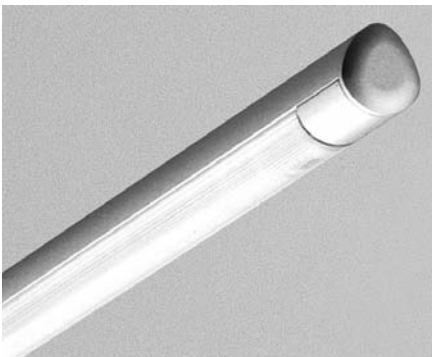
LUMINANCE (Candela / sq meter)

ANGLE	0-DEG	45-DEG	90-DEG
45	13557	12863	10590
55	14533	12650	8699
65	16235	13196	6091
75	19837	16223	3195
85	41935	35189	1506

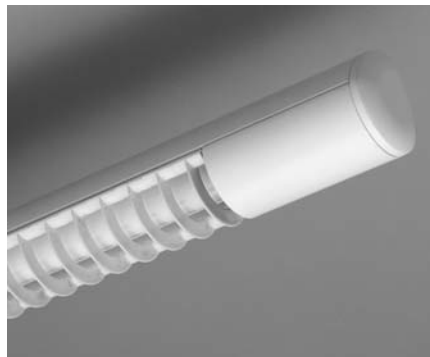
COEFFICIENTS OF UTILIZATION

PCC PW RCR	80				70				50			10			0
	70	50	30	10	70	50	30	10	50	30	10	50	30	10	0
0	.66	.66	.66	.66	.64	.64	.64	.64	.60	.60	.60	.53	.53	.56	.52
1	.59	.56	.53	.50	.57	.54	.51	.49	.51	.48	.46	.45	.43	.42	.40
2	.53	.48	.44	.40	.51	.47	.43	.39	.44	.40	.38	.39	.36	.34	.33
3	.48	.42	.37	.33	.47	.41	.36	.32	.38	.34	.31	.34	.31	.29	.27
4	.44	.37	.32	.28	.43	.36	.31	.27	.34	.30	.26	.30	.27	.25	.23
5	.41	.33	.28	.24	.39	.32	.27	.23	.30	.26	.23	.27	.24	.21	.20
6	.37	.30	.24	.21	.36	.29	.24	.20	.27	.23	.20	.25	.21	.19	.17
7	.35	.27	.22	.18	.33	.26	.21	.18	.25	.21	.18	.22	.19	.17	.15
8	.32	.24	.20	.16	.31	.24	.19	.16	.23	.19	.16	.21	.17	.15	.14
9	.30	.22	.18	.15	.29	.22	.17	.14	.21	.17	.14	.19	.16	.13	.12

Details



ACRYLIC LENS



BLADED BAFFLE

Installation instructions may be found at www.energieighting.com.

Energie LLC, 15000 W. 6th Avenue, Ste. 202A, Golden, CO 80401 Tel 720 963 8055 Fax 720 963 8044 www.energieighting.com

In an effort to continually improve our products, we reserve the right to change or modify designs and/or materials without prior notice.

All rights reserved. These products may be covered by one or more U.S. or international patents or patents pending. 05/06

energie®