

MAXIMO

multiline®



Catalog Number

FIXTURE

MAX – Maximo

LAMPING

39 – 39 Watt Metal Halide

70 – 70 Watt Metal Halide

VOLTAGE

120 – 120 Volt

277 – 277 Volt

OPTIONS

STP – Solid Top Plate

SBP – Solid Bottom Plate

EXAMPLE: MAX-39-120

Specifications

CONSTRUCTION

Main column of luminaire is constructed of extruded aluminum with pressed and welded aluminum endcaps. Wall bracket is extruded, cut and welded aluminum with die-cast aluminum end caps.

SHIELDING

Lamp openings are shielded with gasketed glass plates. Optional solid plate may be specified.

FINISH

Main lamp housing finished in lightly textured charcoal polyester powdercoat. Wall bracket finished in lightly textured gray polyester powdercoat. Finish is specially developed for outside exposure and all-weather resistance.

ELECTRICAL

Specify 120 or 277 volt. Fixture is fully gasketed and U.L./C.U.L. **WET LOCATION LISTED.** Supplied with internal electronic ballasts.

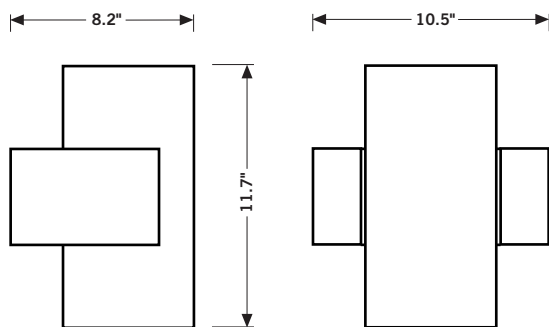
LAMPING

Two 39 or 70 Watt PAR30 metal halide lamps with E26 medium screwbase. Lamps not included.

MOUNTING

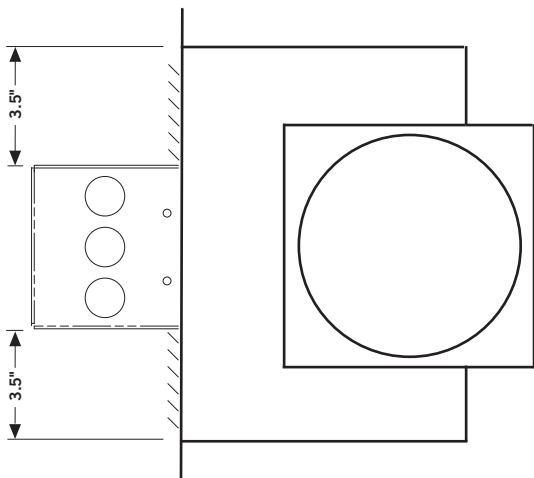
Fixture is supplied with Énergie junction box. See reverse for detail.

Dimensions

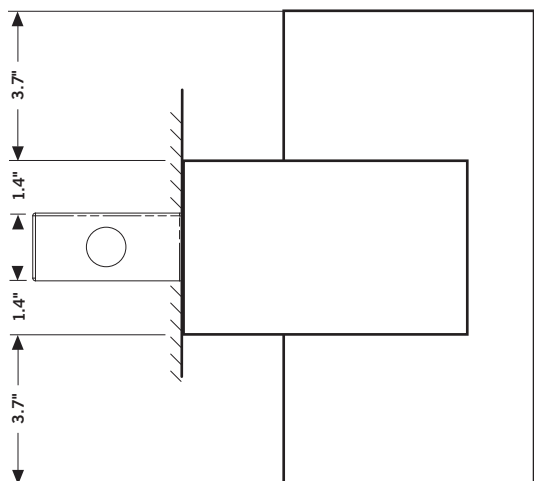


Mounting Diagrams

BOTTOM VIEW



SIDEVIEW



Installation instructions may be found at www.energielighting.com.