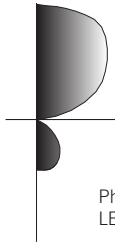


# LEVEL PENDANT



Photometric Drawing for LEP-2

TYPE \_\_\_\_\_ PROJECT \_\_\_\_\_



## CATALOG NUMBER

FIXTURE	NUMBER OF MODULES	VOLTAGE
LEP Level Pendant	2 2 Fixture Head Modules	120 120 v
	3 3 Fixture Head Modules	277 277 v

## SPECIFICATIONS

**Construction.** Fixture body constructed of extruded aluminum.

**Finish.** Fixture finished in thermopainted metallic silver.

**Shielding.** Technology (MDT®) louver and an acrylic overlay. Louver is specular and allows approximately 22% downlight.

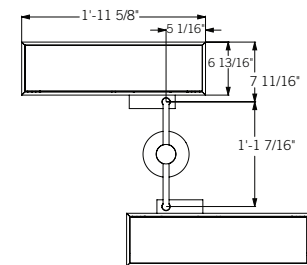
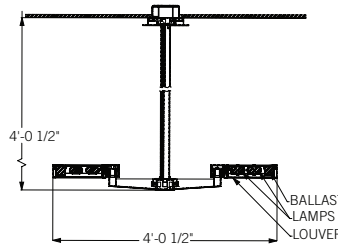
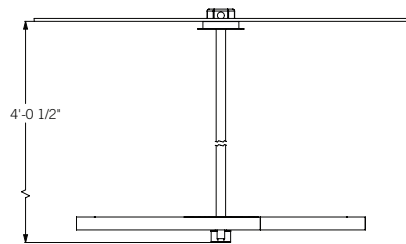
**Electrical.** Specify 120 or 277 volts. Fixture is UL/CUL Listed for damp locations.

**Lamping.** 55 watt compact fluorescent. 2-head pendant uses 4 lamps, 3-head pendant uses 6 lamps. Lamps not included.

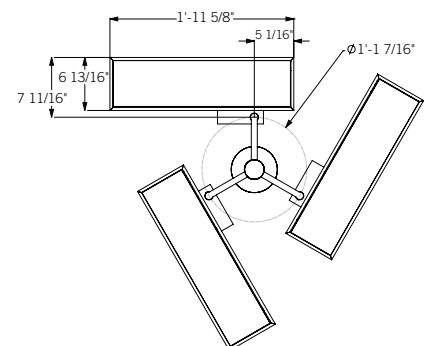
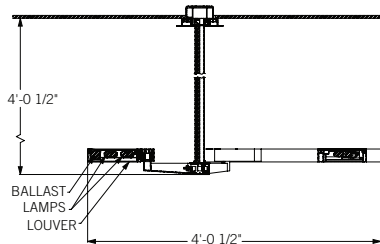
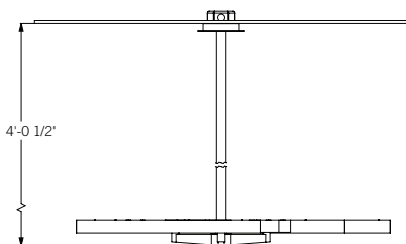
**Mounting.** Mounted with an aluminum rigid stem with a 46" overall suspension. Stem may be cut in the field. Fixture mounts to standard octagonal junction box. Fixture head position may be adjusted by the user.

## DIMENSIONS & DETAILS

### 2 FIXTURE HEAD MODULES



### 3 FIXTURE HEAD MODULES



Installation instructions may be found at [www.energielighting.com](http://www.energielighting.com).



Energie LLC, 4885 Ward Road, Suite 300, Wheat Ridge CO 80033 Tel 720.963.8055 Fax 720.963.8044 [www.energielighting.com](http://www.energielighting.com)  
 In an effort to continually improve our products, we reserve the right to change or modify designs and/or materials without prior notice.  
 All rights reserved. These products may be covered by one or more U.S. or international patents or patents pending. 07/10

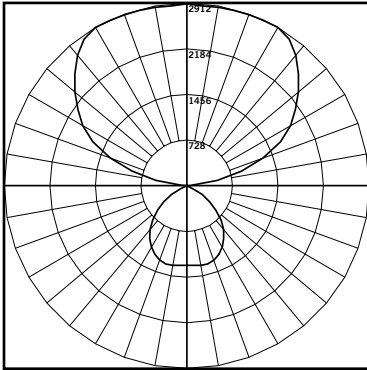


# LEVEL PENDANT

TYPE \_\_\_\_\_  
PROJECT \_\_\_\_\_

## PHOTOMETRICS

LEP-2



### CANDELA DISTRIBUTION

	0	45	90
0	1272.4	1272.4	1272.4
5	1272.4	1272.4	1272.4
15	1291.2	1272.4	1224.4
25	1207.7	1176.5	1099.3
35	1032.5	990.8	915.7
45	769.7	730.1	657.1
55	446.4	427.6	388.0
65	104.3	104.3	104.3
75	2.1	2.1	2.1
85	0.0	2.1	0.0
95	52.1	143.9	64.7
105	903.2	861.5	461.0
115	1656.2	1466.4	974.1
125	2121.4	1946.2	1451.8
135	2528.1	2359.2	1883.6
145	2855.6	2615.7	2275.7
155	2907.8	2755.5	2551.1
165	2895.2	2826.4	2738.8
175	2880.6	2868.1	2878.6
180	2901.5	2901.5	2901.5

### LUMINAIRE

**Description:** Level 2-head Pendant with (4) 55w Compact Fluorescent lamps

**Catalog Number:** LEP-2-120

**Efficiency:** 65%

**Distribution:** 21.5% direct, 78.5% indirect

### LUMINANCE (Candela/sq meter)

ANGLE	0-DEG	45-DEG	90-DEG
45	2803	2659	2393
55	2004	1920	1742
65	636	636	636
75	21	21	21
85	0	62	0

### ZONAL LUMEN SUMMARY

ZONE	LUMENS	% LAMP	% FIXT
0 - 30	1018.47	5.3	8.1
0 - 40	1631.44	8.5	13.0
0 - 60	2563.93	13.4	20.5
0 - 90	2690.79	14	21.5
90 - 120	2414.03	12.6	19.3
90 - 130	4095.21	21.3	32.7
90 - 150	7475.9	38.9	59.8
90 - 180	9817.63	51.1	78.5
0 - 180	12508.42	65.1	100

### ZONAL LUMEN SUMMARY

ZONE	LUMENS
0-10	121.85
10-20	358.03
20-30	538.59
30-40	612.97
40-50	555.66
50-60	376.83
60-70	119.37
70-80	5.25
80-90	2.24
90-100	191.58
100-110	831.72
110-120	1390.72
120-130	1681.18
130-140	1759.64
140-150	1621.05
150-160	1268.66
160-170	799.07
170-180	274.01

### COEFFICIENTS OF UTILIZATION

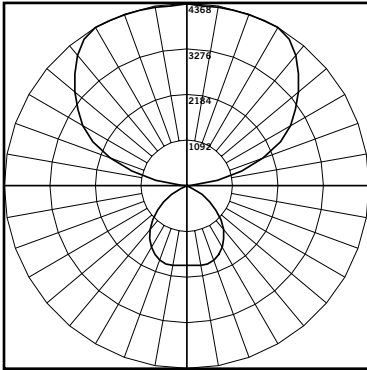
RC RW	80				70				50			30			10			0
	70	50	30	10	70	50	30	10	50	30	10	50	30	10	50	30	10	0
0	65	65	65	65	58	58	58	58	44	44	44	31	31	31	20	20	20	14
1	60	57	55	53	53	51	49	47	39	38	37	28	27	27	18	17	17	13
2	55	50	47	44	48	45	42	39	35	33	31	25	24	23	16	15	15	11
3	50	45	40	37	44	40	36	33	31	28	26	22	21	20	14	14	13	10
4	46	39	35	31	41	35	31	28	27	25	22	20	18	17	13	12	11	9
5	42	35	30	27	37	31	27	24	24	22	19	18	16	15	12	11	10	8
6	39	32	27	23	34	28	24	21	22	19	17	16	14	13	11	10	9	7
7	36	28	24	20	32	25	21	18	20	17	15	15	13	11	10	9	8	6
8	33	26	21	18	29	23	19	16	18	15	13	13	12	10	9	8	7	5
9	31	23	19	16	27	21	17	14	17	14	12	12	10	9	8	7	6	5
10	29	21	17	14	25	19	15	13	15	12	10	11	9	8	8	7	6	5

# LEVEL PENDANT

TYPE \_\_\_\_\_  
PROJECT \_\_\_\_\_

## PHOTOMETRICS

LEP-3



### CANDELA DISTRIBUTION

	0	45	90
0	1908.6	1908.6	1908.6
5	1908.6	1908.6	1908.6
15	1936.8	1908.6	1836.6
25	1811.6	1734.7	1648.9
35	1548.8	1486.2	1373.6
45	1154.5	1095.1	985.6
55	669.6	641.4	582.0
65	156.4	156.4	156.4
75	3.1	3.1	3.1
85	0.0	3.1	0.0
95	78.2	215.9	97.0
105	1354.8	1292.2	691.5
115	2484.3	2199.6	1461.2
125	3182.1	2919.2	2177.7
135	3792.2	3538.7	2825.4
145	4283.4	3923.6	3413.6
155	4361.6	4133.2	38266
165	4342.8	4239.6	4108.2
175	4321.0	4302.2	4317.8
180	4352.3	4352.3	4352.3

### LUMINAIRE

**Description:** Level 3-head Pendant with (6) 55w Compact Fluorescent lamps

**Catalog Number:** LEP-3-120

**Efficiency:** 65%

**Distribution:** 21.5% direct, 78.5% indirect

### LUMINANCE (Candela/sq meter)

ANGLE	0-DEG	45-DEG	90-DEG
45	4018	3811	3430
55	2873	2752	2497
65	911	911	911
75	29	29	29
85	0	88	0

### ZONAL LUMEN SUMMARY

ZONE	LUMENS	% LAMP	% FIXT
0 - 30	1527.7	5.3	8.1
0 - 40	2447.16	8.5	13
0 - 60	3845.87	13.4	20.5
0 - 90	4036.1	14	21.5
90 - 120	3621.01	12.6	19.3
90 - 130	6142.78	21.3	32.7
90 - 150	11213.8	38.9	59.8
90 - 180	14726.39	51.1	78.5
0 - 180	18762.5	65.1	100

### ZONAL LUMEN SUMMARY

ZONE	LUMENS
0-10	182.77
10-20	537.05
20-30	807.88
30-40	919.45
40-50	833.48
50-60	565.24
60-70	179.04
70-80	7.86
80-90	3.33
90-100	287.37
100-110	1247.57
110-120	2086.08
120-130	2521.76
130-140	2639.45
140-150	2431.57
150-160	1902.98
160-170	1198.61
170-180	411.01

### COEFFICIENTS OF UTILIZATION

RC RW	80				70				50			30			10			0
	70	50	30	10	70	50	30	10	50	30	10	50	30	10	50	30	10	0
0	65	65	65	65	58	58	58	58	44	44	44	31	31	31	20	20	20	14
1	60	57	55	53	53	51	49	47	39	38	37	28	27	27	18	17	17	13
2	55	50	47	44	48	45	42	39	35	33	31	25	24	23	16	15	15	11
3	50	45	40	37	44	40	36	33	31	28	26	22	21	20	14	14	13	10
4	46	39	35	31	41	35	31	28	27	25	22	20	18	17	13	12	11	9
5	42	35	30	27	37	31	27	24	24	22	19	18	16	15	12	11	10	8
6	39	32	27	23	34	28	24	21	22	19	17	16	14	13	11	10	9	7
7	36	28	24	20	32	25	21	18	20	17	15	15	13	11	10	9	8	6
8	33	26	21	18	29	23	19	16	18	15	13	13	12	10	9	8	7	5
9	31	23	19	16	27	21	17	14	17	14	12	12	10	9	8	7	6	5
10	29	21	17	14	25	19	15	13	15	12	10	11	9	8	8	7	6	5