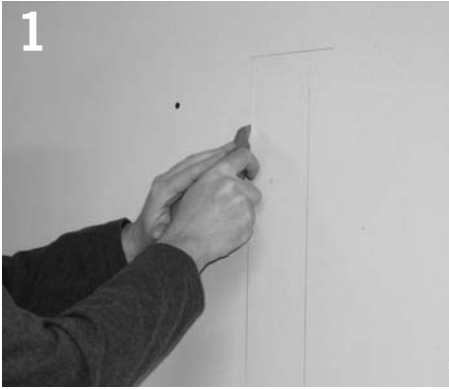


# ZENN T0, T1, T2, T3, T4

énergie™

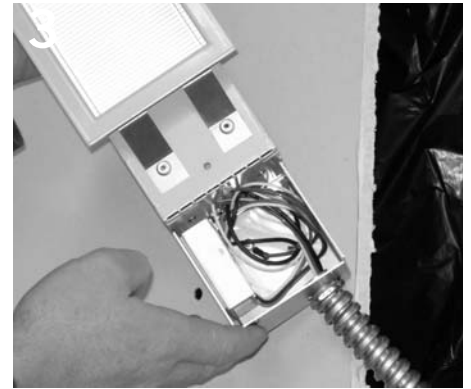
## Installation Instructions



1 Cut hole in drywall per dimensions shown.



2 Remove electrical box cover from fixture.



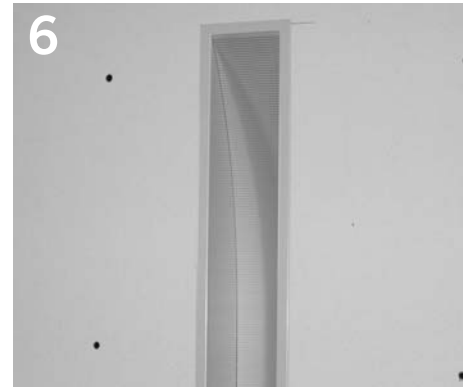
3 Secure conduit to fixture and make electrical connection inside box.



4 Replace electrical cover and install in wall.



5 Pop reflector out and tighten screw to secure fixture into wall. (N/A for ZTO)



6 Replace reflector into position as shown. (N/A for ZTO)



7 Remove screws from glass to lamp fixture. (where applicable)



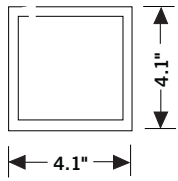
8 Lamp fixture as labelled and replace glass.

Product to be installed by qualified electrician only.

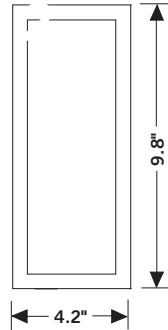
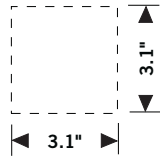
PART # 04040601-01 REV. A

# ZENN T0, T1, T2, T3, T4

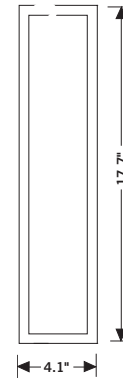
## Dimensions



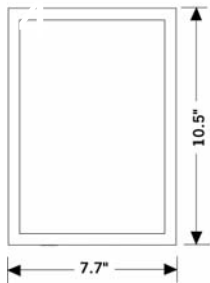
Zenn T0



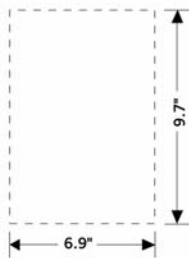
Zenn T1



Zenn T2



Zenn T3



Zenn T4

**Note:** Fixture dimensions shown in solid line, wall cut-out shown in dashed line.