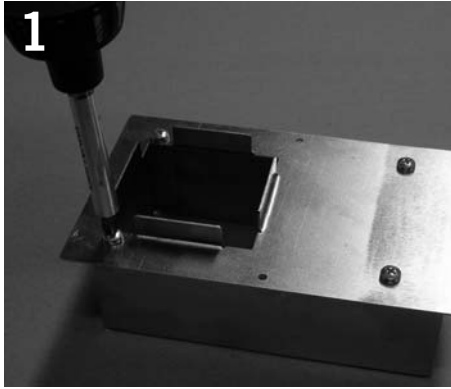
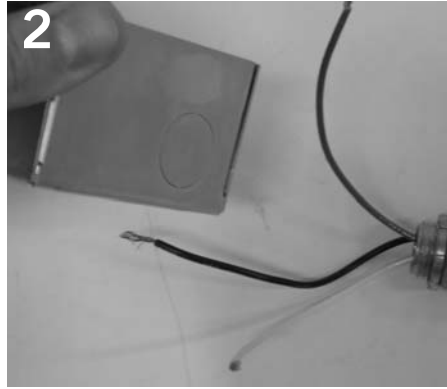


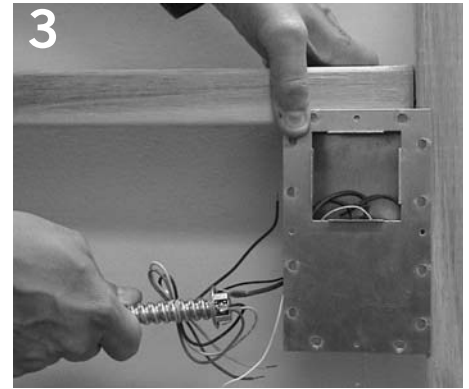
Installation Instructions



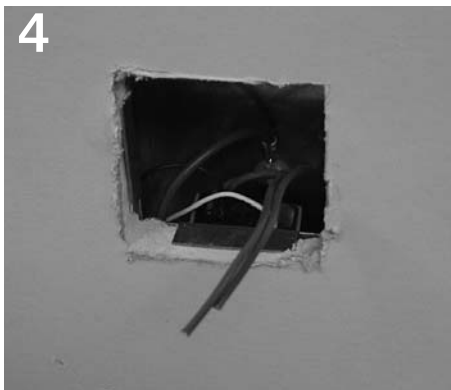
1 Remove backbox cover by removing 4 screws.



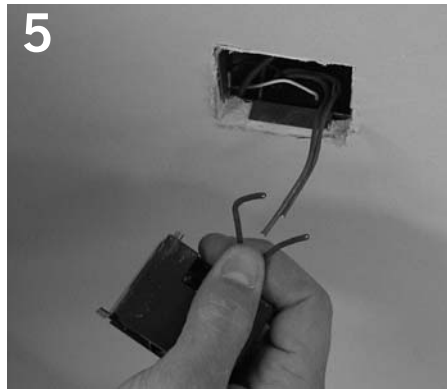
2 Remove knockout of choice and install conduit. Make electrical connection and reinstall backbox cover.



3 Install backbox to stud wall prior to drywall.



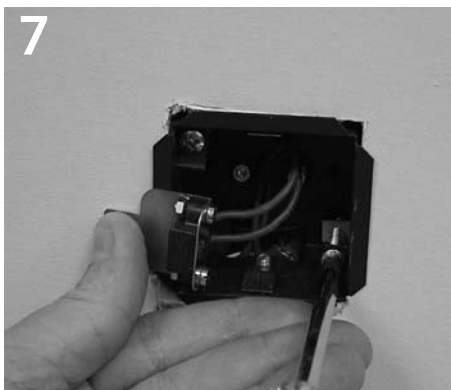
4 Cut hole in drywall around opening in Zas backbox.



5 Make electrical connection to lamp housing.



6 Snap housing into backbox.



7 Anchor housing into backbox by tightening (2) screws in a clockwise direction until clamps are snug.

Product to be installed by qualified electrician only.



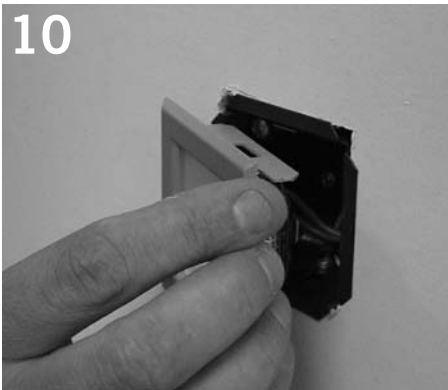
8 Install lamp per relamp label. NOTE: Lamp should not be touched with bare hand.



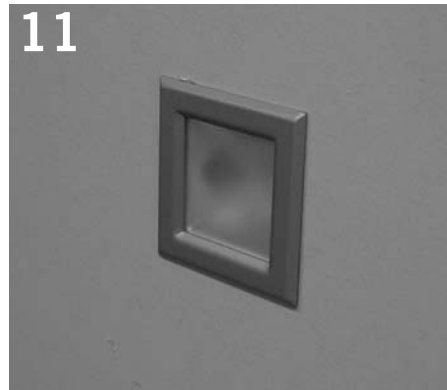
9 Slide lamp and lamp socket into reflector assembly.

PART # 04040522-01

Installation Instructions



Snap reflector into fixture housing.



Fixture should be flush to wall when complete.