

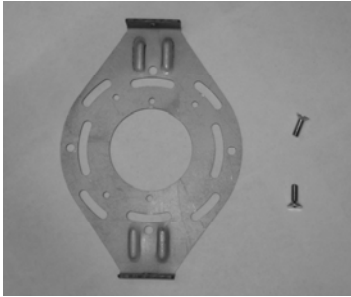
STALACTITE SERIES

énergie

Installation Instructions

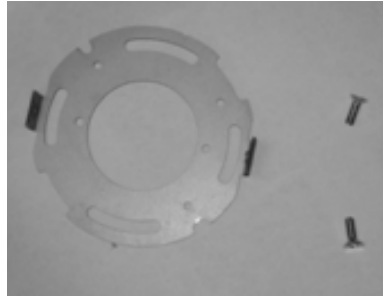
Large Hardware Kit contains:

- One (1) Fixture Mounting bracket
- Two (2) Screws



Small Hardware Kit contains:

- One (1) Fixture Mounting bracket
- Two (2) Screws



Supplied By Others:

For Installation of off grid fixtures:

- One(1) octagonal J-box
- One(1) ¼-20 threaded bolt and nut
- One(1) electrical box hangers



- Energie J-box supplied for STRS



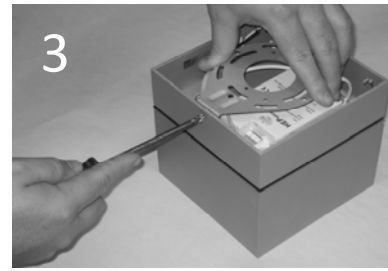
Fixture location off Grid/hard ceiling



1
If using a T-grid ceiling, attach the Caddy/B-line crossbar to the T-grid ceiling as shown. Make sure to tie the crossbar off to the ceiling structure per code.



2
If using a T-grid ceiling, attach the octagonal /Energie J-box to the Caddy/B-Line bar as shown. If installing in a hard ceiling mount the j-box to structure. Run conduit to J-box with proper feed wiring for that location.



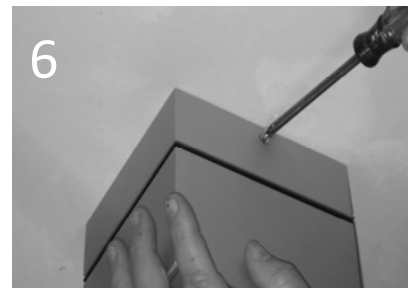
3
Detach mounting plate from fixture by removing screws in fixture.



4
Attach mounting bracket to junction box



5
Make electrical connection.



6
Align the mounting bracket to holes in the fixture and secure fixture to the mounting bracket using the supplied screws.

Product to be installed by qualified electrician only.

Rev. A