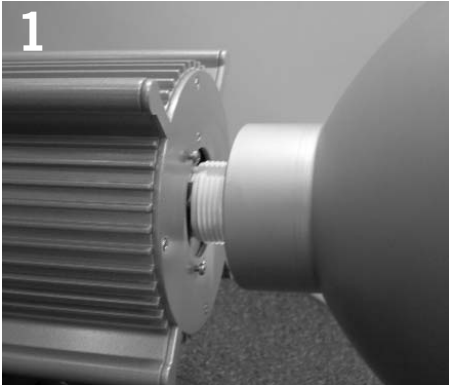


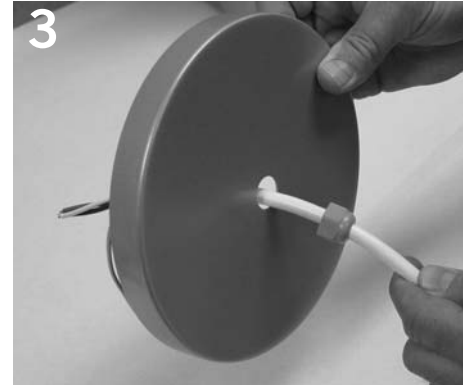
Installation Instructions



1
Align the keyed holes of the reflector with the three screws located on the fixture body.



2
Rotate reflector in place as shown and tighten screws to secure reflector to housing.



3
Thread loose end of cord through strain relief cap and canopy.



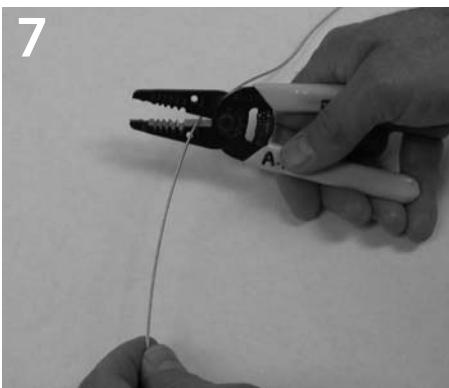
4
Next thread cord through canopy plate as shown.



5
Make electrical connection to pre-installed junction box.



6
Screw mounting plate to junction box.

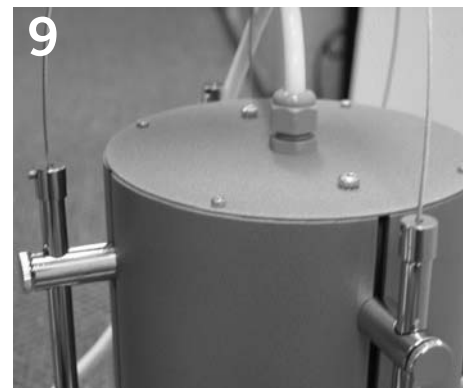


7
Cut cable to appropriate length. NOTE: Two cables for four mounting points - cables loop over canopy and must be TWICE the overall suspension length.

Product to be installed by qualified electrician only.

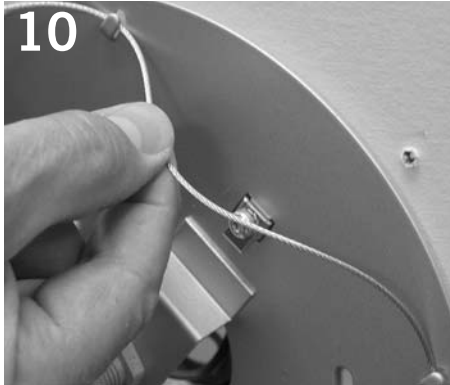


8
Insert cable into cable gripper.

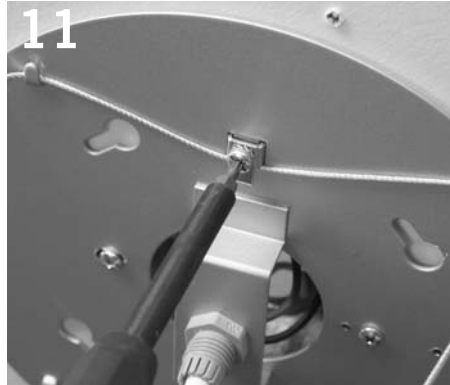


9
Loop opposite end of cable into adjacent gripper and repeat on other side of fixture.

Installation Instructions



Place cable loop over mounting tabs and behind screw-stop on mounting plate.



Secure cable by tightening screw-stop.



Slide canopy onto mounting plate and secure with threaded bushing.



Install lamp.

Rondo 3 - 9"

18 or 26 watt 4 pin compact fluorescent.

Rondo 3 - 13"

32 or 42 watt 4 pin compact fluorescent.
70 or 100 watt metal halide with E26 medium screwbase. Lamp must be open fixture rated.

Product to be installed by qualified electrician only.