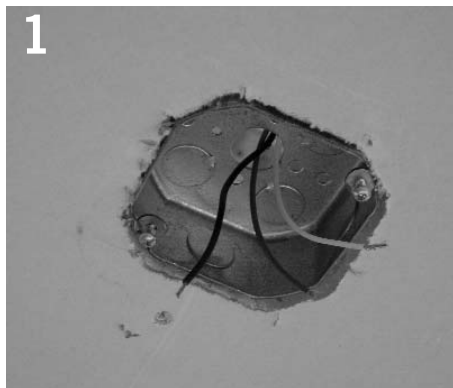


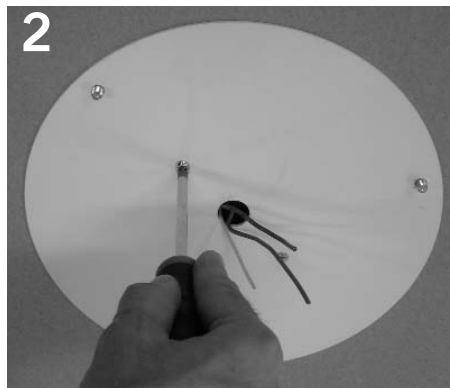
POLARON PENDANT

énergie™

Installation Instructions



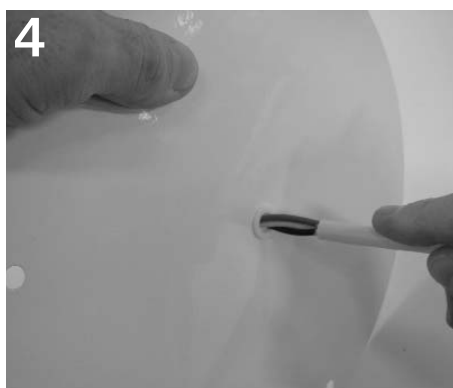
1
Install 4" octagonal junction box (not provided) into ceiling. See dimension drawing for junction box placement.



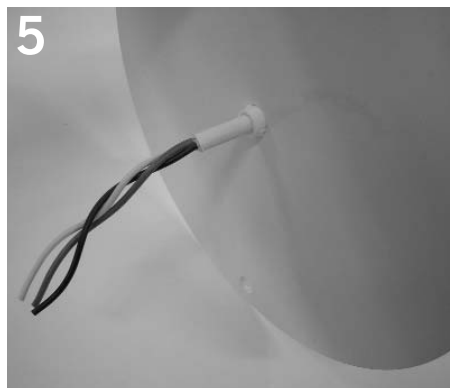
2
Install support canopy to junction box with (2) #8-32 flathead screws (provided).



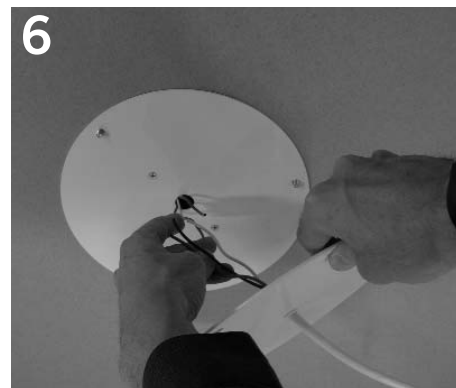
3
Insert cord bushing into cover plate with small finished edge of bushing opposite countersinks on cover plate.



4
Insert power cord into bushing from finished edge side.



5
Pull power cord through bushing with approximately 8" on countersunk hole side.



6
Raise cover plate to support canopy and make electrical connection. Push connection into junction box.



7
Secure cover plate to support canopy by installing (3) cable grippers.



8
Remove diffuser from base by turning counterclockwise.



9
Remove ballast cover by loosening (3) screws and turning cover counterclockwise.

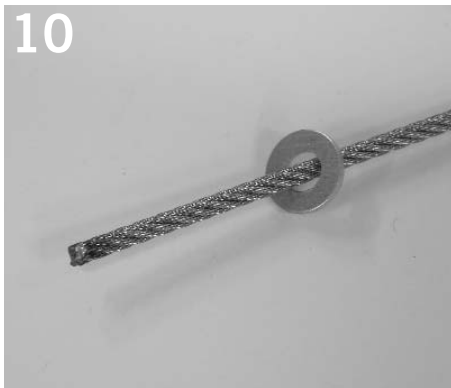
Product to be installed by qualified electrician only.

PART # 08050811-01 Rev. A

POLARON PENDANT

énergie™

Installation Instructions



10 Place small washers on suspension cables - one per cable.



11 Place large washers on suspension cables - one per cable.



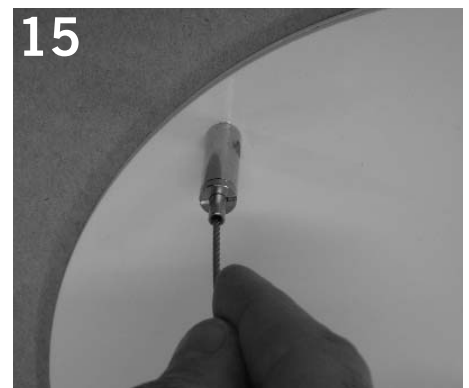
12 Slide washers to ball stop at end of suspension cables.



13 Insert suspension cables into luminaire base from inside luminaire body.



14 Pull cables until washers (at ball stops) contact luminaire base.



15 Insert suspension cables into grippers and raise luminaire to desired height.



16 Trim excess cable at grippers.



17 Insert lower end of power cord into bushing on top of luminaire.



18 Trim excess cord and make electrical connection inside luminaire.

Product to be installed by qualified electrician only.

PART # 08050811-01 Rev. A

POLARON PENDANT

énergie™

Installation Instructions



19 Push connections into splice compartment in luminaire.



20 Replace ballast cover and tighten securing screws.



21 Install lamp(s) per relamp label and reinstall diffuser.