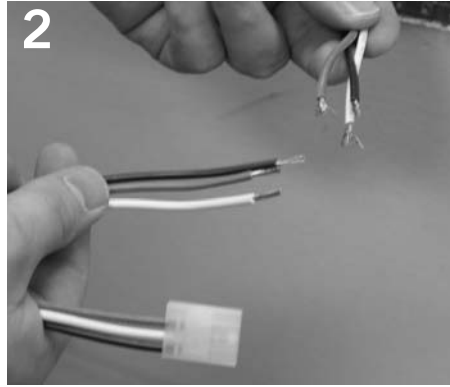


OPUS SCONCE VERTICAL (OPS) énergie™

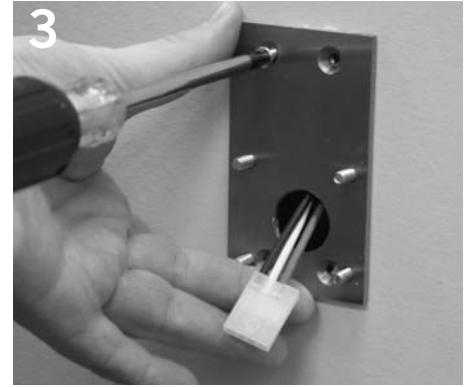
Installation Instructions



1 Install Energie junction box vertically into wall.



2 Make electrical connection to loose pigtail.



3 Attach studded mounting plate with 4 screws.



4 Slide coverplate over mounting plate.



5 Slide fixture mounting bracket over studs on mounting plate.



6 Secure mounting bracket with nuts.



7 Pull cover-plate buttons on back of fixture and remove coverplate.



8 Install lamp. 55 Watt T5 circline.



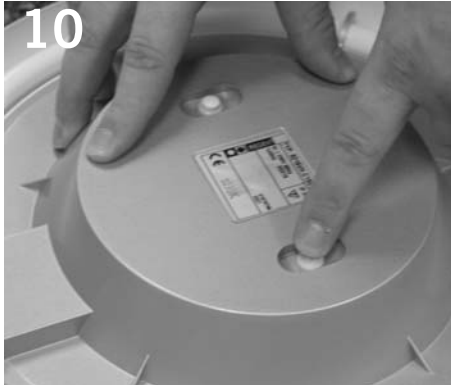
9 Position coverplate with lampholds secure around the lamp.

Product to be installed by qualified electrician only.

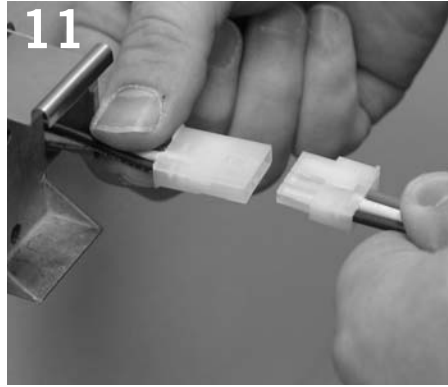
PART # 05101001-01

OPUS SCONCE VERTICAL (OPS) énergie

Installation Instructions



10
Depress buttons to secure coverplate in place.



11
Quick-connect fixture to pigtail in junction box.



12
Slide fixture base over mounting bracket.



13
Slide fixture onto bracket until spring loaded clip engages.