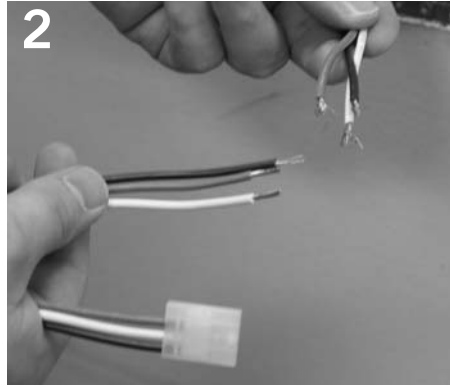


# OPUS SCONCE HORIZONTAL (OPH) énergie<sup>®</sup>

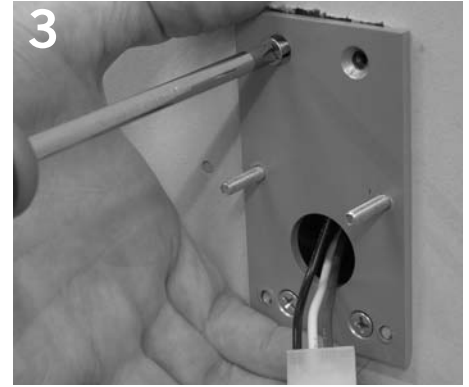
## Installation Instructions



1 Install Energie junction box vertically into wall.



2 Make electrical connection to loose pigtail.



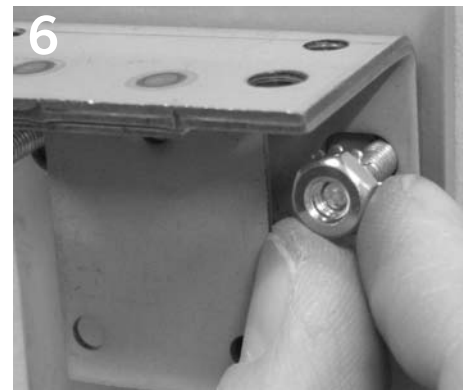
3 Attach studded mounting plate with 4 screws.



4 Slide coverplate over mounting plate.



5 Slide fixture mounting bracket over studs on mounting plate.



6 Secure mounting bracket with nuts.



7 Pull cover-plate buttons on back of fixture and remove coverplate.



8 Install lamp. 55 Watt T5 circline.



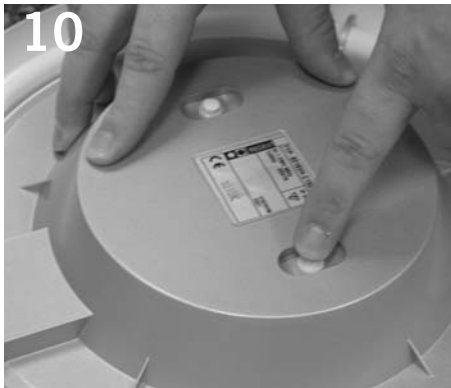
9 Position coverplate with lampholds secure around the lamp.

Product to be installed by qualified electrician only.

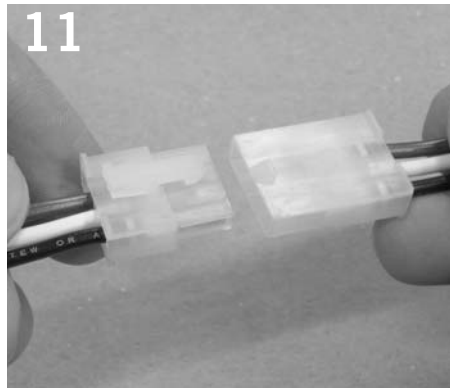
PART # 05101011-01

# OPUS SCONCE HORIZONTAL (OPH) énergie™

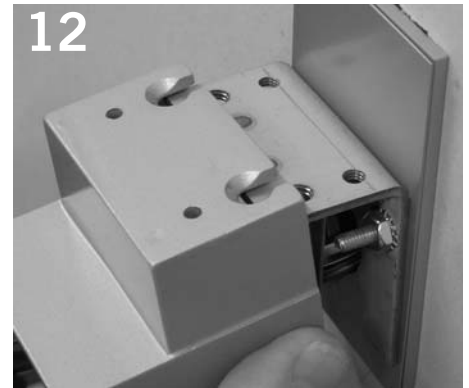
## Installation Instructions



10  
Depress buttons to secure coverplate in place.



11  
Quick-connect fixture to pigtail in junction box.



12  
Slide fixture base over mounting bracket.



13  
Secure fixture with screws as shown.