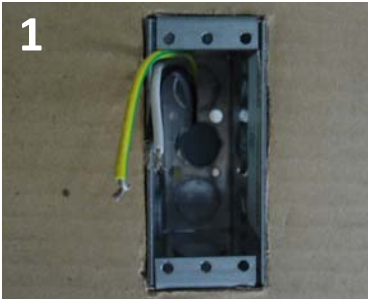


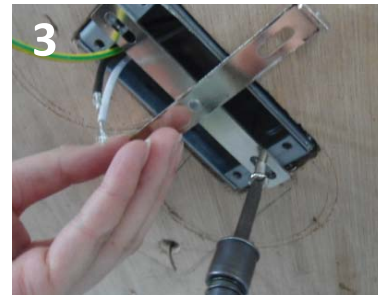
Installation Instructions



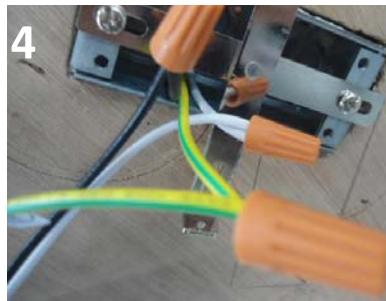
1
Install Energie junction box in proper orientation for the fixture.



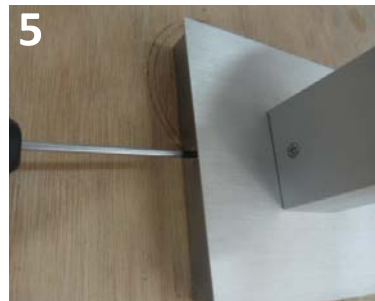
2
Disassemble the J-Box Plate from the luminaire



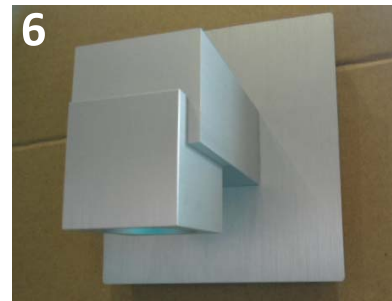
3
Fix the J-Box Plate to the J-Box



4
Make electrical connection



5
Install the luminaire with the screw



6
Finish

Product to be installed by qualified electrician only.

Energie LLC, 4885 Ward Road, Suite 300 Wheat Ridge, CO 80033 Tel 720 963 8055 Fax 720 963 8044 www.energielighting.com 1

All rights reserved. These products may be covered by one or more U.S. or international Patents or patents pending. 02/03