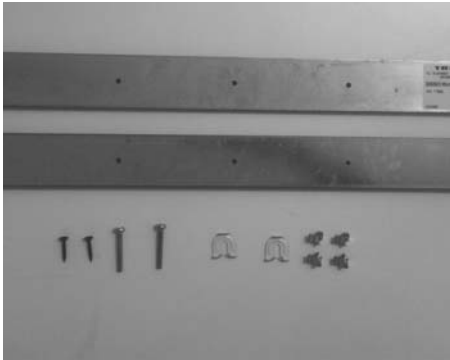
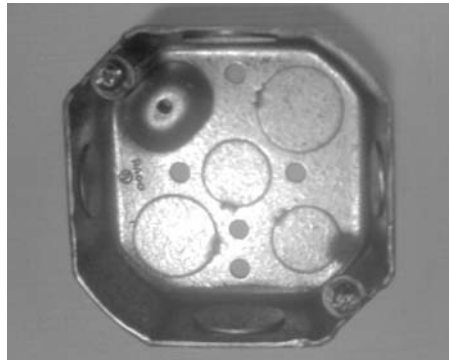


## Surface Mount Installation Kit Contents



### **SURFACE KIT CONTENTS:**

- Two (2) Mounting Bars
- Four (4) Splice Clips
- Two (2) 10-12x1 1/4" Screws
- Two (2) 1 1/4" Drywall Screws
- Two (2) Mounting Clips



### **SUPPLIED BY CONTRACTOR:**

- One (1) Octagonal Junction Box

**Note:** Luminaire must be tied to structure per local requirements.

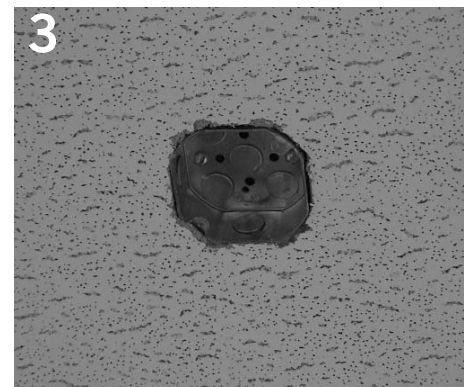
## Installation Instructions- Grid Ceiling



1  
Install splice clip into slot at each end of mounting bar.



2  
Snap splice clips and mounting bar assembly onto top side of ceiling grid T-bar. Distance between mounting bars is noted as "MTG" on dimension drawing. Wire to structure as required.



3  
Install octagonal junction box into ceiling. See dimension drawing for junction box placement.

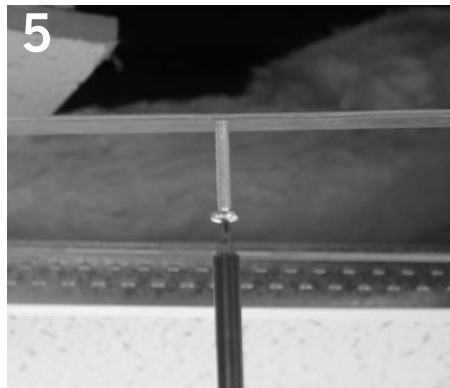
Product to be installed by qualified electrician only.

PART# 04040653-01 REV .01

## Installation Instructions- Grid Ceiling continued...



Remove reflector.

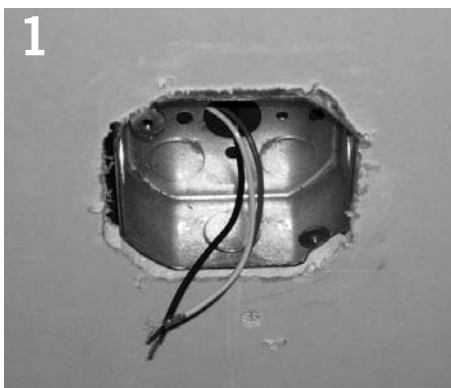


Start provided screws in mounting bars as shown.

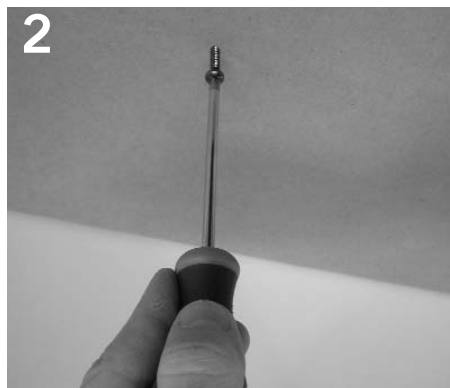


Raise fixture into place. Slide mounting clips over screws and tighten to secure fixture.

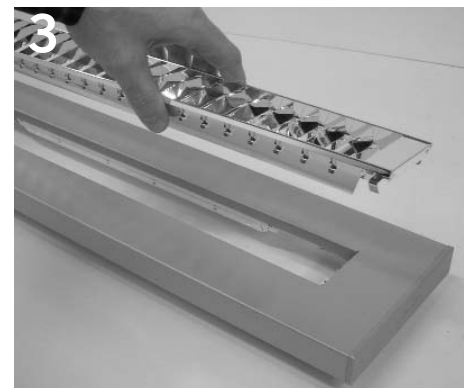
## Installation Instructions- Hard Ceiling



Install 4" octagonal junction box (not provided) into ceiling. See dimension drawing for junction box placement.



Start (2) 10-12 x 1 1/4" screws (provided) or equivalent. Do not tighten to ceiling. See dimension drawing for mounting screw placement.



Unsnap reflector.



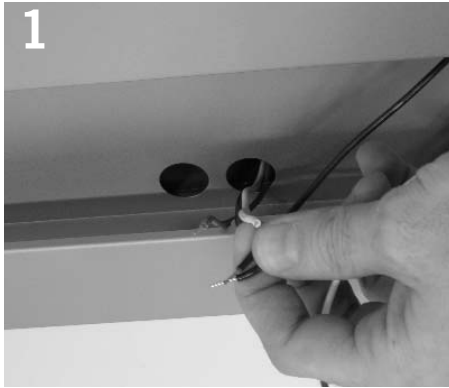
Raise fixture into place. Slide mounting clips over screws and tighten to secure fixture.

Product to be installed by qualified electrician only.

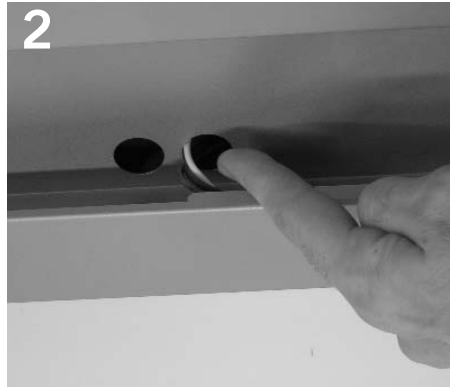
PART# 04040653-01 REV .01

# LUCEO SURFACE

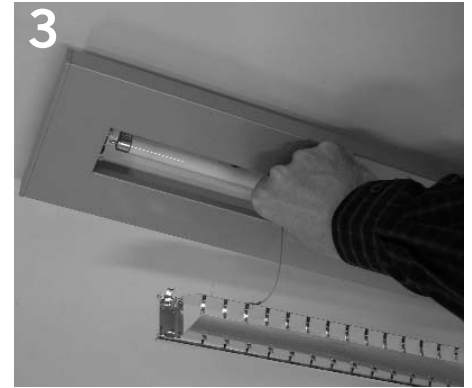
## Wiring the Fixture



1 Make electrical connection through access holes.



2 Push connections back into junction box.



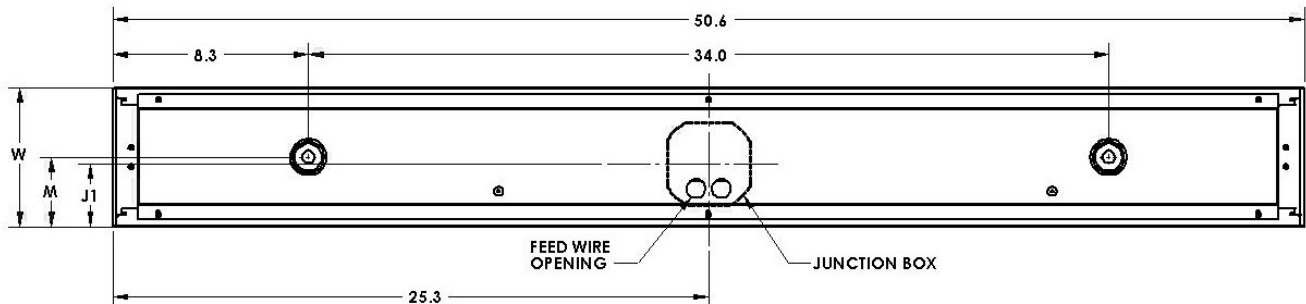
3 Install lamp(s) per relamp label.



4 Re-attach reflector.

## Dimension drawing

### LUCEO SURFACE, 1 AND 2 LAMP



KEY	DESCRIPTION	1 LAMP	2 LAMP
W	Overall width	5.9"	7.1"
M	Mounting holes	3.0"	3.6"
J1	J-Box centerline	2.7"	2.7"

Product to be installed by qualified electrician only.

PART# 04040653-01 REV .01