

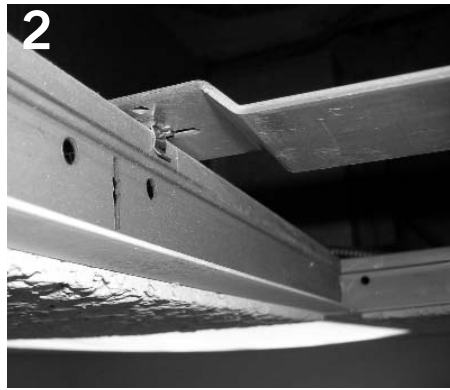
# LUCEO WALL WASH - GRID CEILING

énergie™

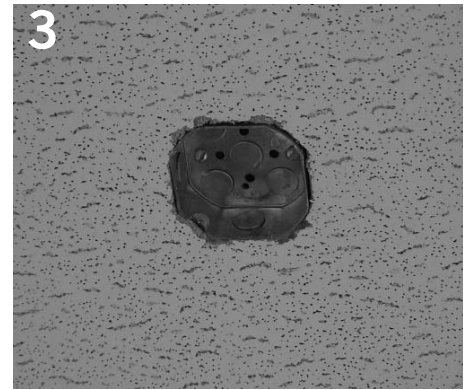
## Installation Instructions



1  
Install splice clip into slot at each end of mounting bar.



2  
Snap splice clips and mounting bar assembly onto top side of ceiling grid T-bar. Distance between mounting bars is noted as "MTG" on dimension drawing. Wire to structure as required.



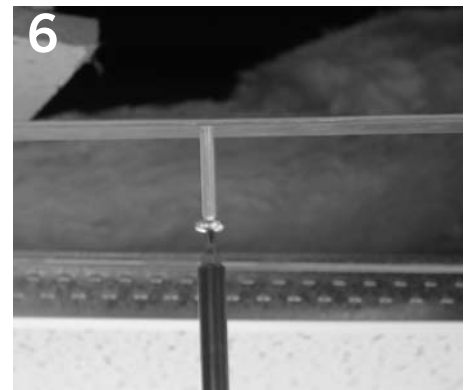
3  
Install octagonal junction box (not provided) into ceiling. See dimension drawing for junction box placement.



4  
Loosen - DO NOT REMOVE - (2) screws securing reflector.



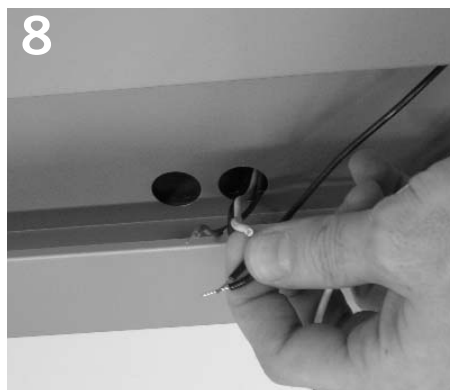
5  
Remove reflector.



6  
Start provided screws in mounting bar as shown.



7  
Raise fixture into place. Slide mounting clips over screws and tighten to secure fixture.



8  
Make electrical connection through access holes.



9  
Push connections back into junction box.

Product to be installed by qualified electrician only.

PART# 04040655-01 REV .01

# LUCEO WALL WASH - GRID CEILING

## Dimension drawings



Re-attach reflector and install lamp per relamp label.

**LUCEO WALL WASH, 1-LAMP**

