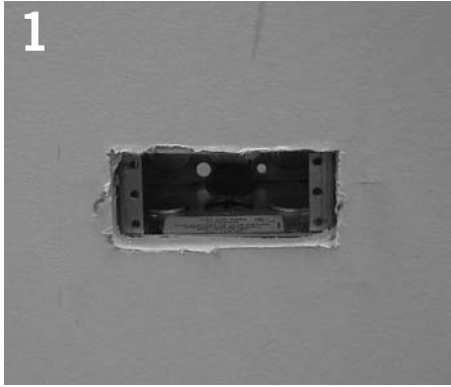


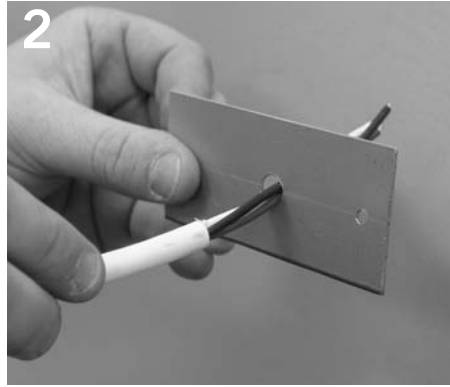
LEVEL WALL 4'

énergie™

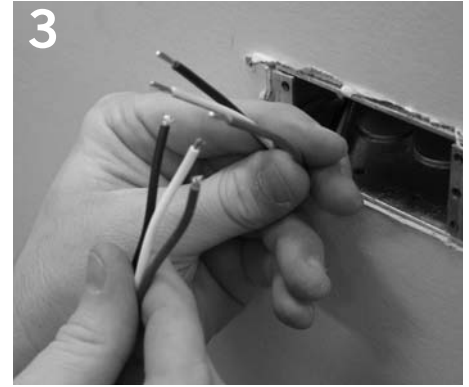
Installation Instructions



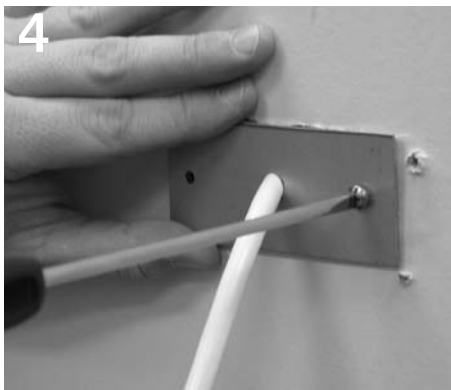
1 Install Energie junction box into wall.



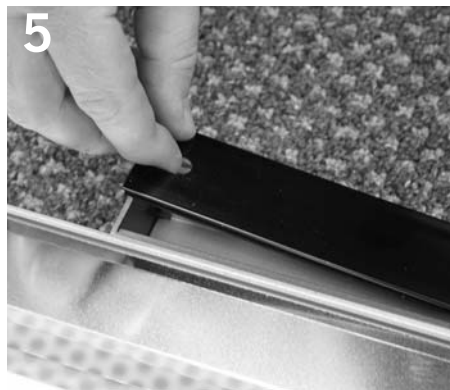
2 Slide cord through coverplate.



3 Make electrical connection.



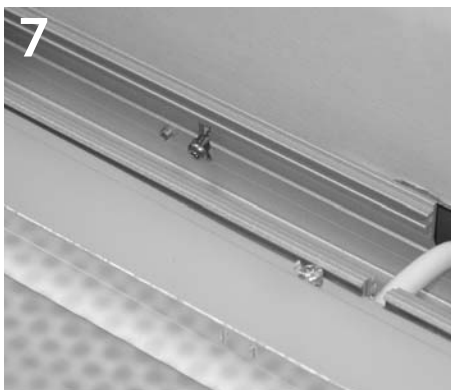
4 Screw coverplate to junction box.



5 Remove plastic coverplate from fixture wiring compartment.



6 Sink mounting screws at keyhole locations, found on fixture housing.



7 Hang fixture on mounting screws.



8 Level fixture by tightening allen screws.



9 Replace plastic coverplate. Install lamps per relamp label.

Product to be installed by qualified electrician only.

PART #06012702-02