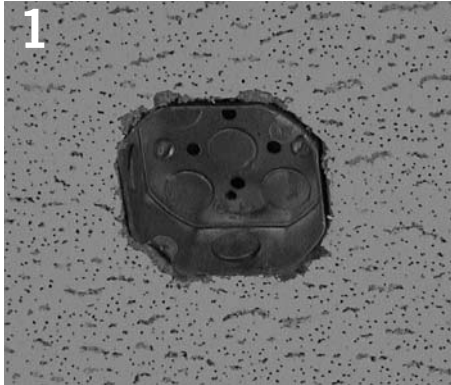


# LEVEL PENDANT

énergie™

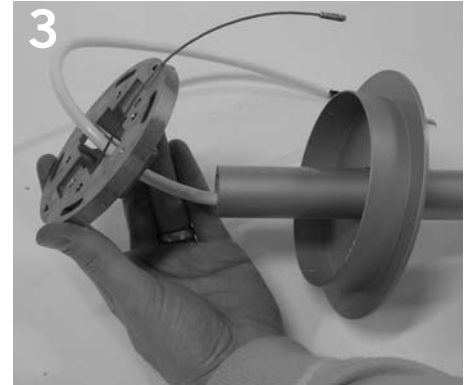
## Installation Instructions



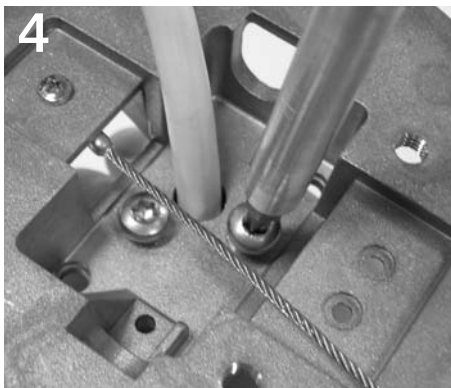
1 Install octagonal junction box into ceiling.



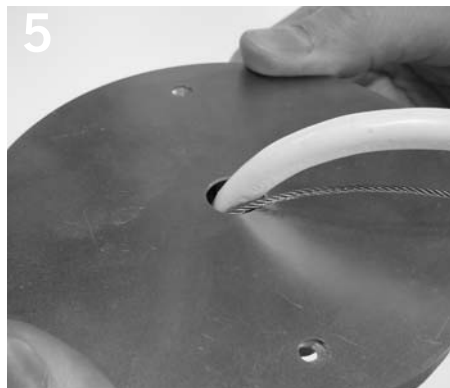
2 Slide mounting canopy off of mounting plate. Slide wireway cover and canopy onto stem as shown.



3 Make electrical connection. Route cord through mounting plate.



4 Attach mounting plate to stem with (2) two screws provided.



5 Slide barrier plate over cord and canopy as shown.



6 Screw mounting plate to junction box, attaching lanyard at the same time.



7 Slide mounting canopy to cover mounting plate.



8 Remove plastic cover from fixture heads.



9 Attach fixture heads to arm and route cord as shown.

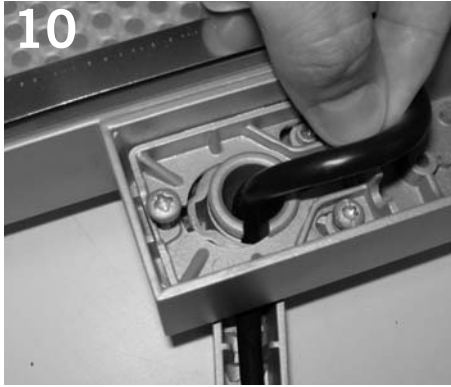
Product to be installed by qualified electrician only.

PART # 06012702-03

# LEVEL PENDANT

énergie™

## Installation Instructions



10 Slide bracket onto arm stem to secure fixtures to arms.



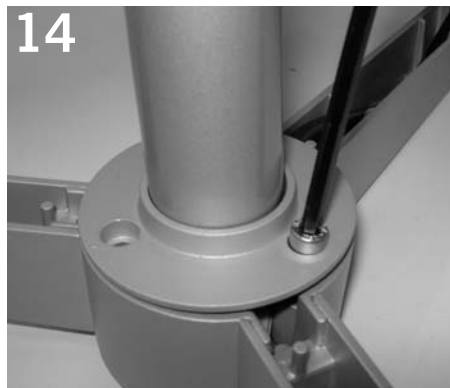
11 Tighten bracket screws.



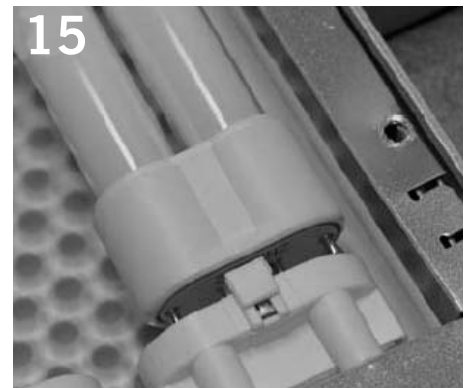
12 Replace fixture head covers.



13 Connect fixture head wiring to stem wiring in center of arm.



14 Attach stem to arm with (3) three hex bolts provided.



15 Install lamps. 55 W compact fluorescent only.

Product to be installed by qualified electrician only.

PART # 06012702-03