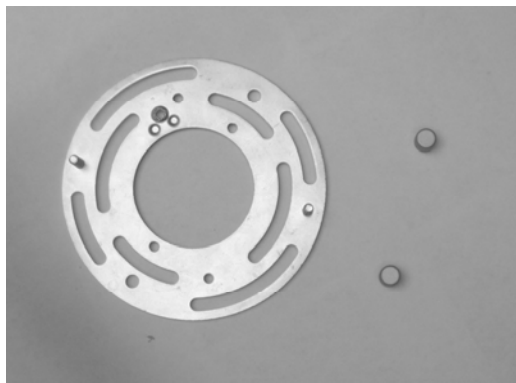


COMET SERIES

Installation Instructions

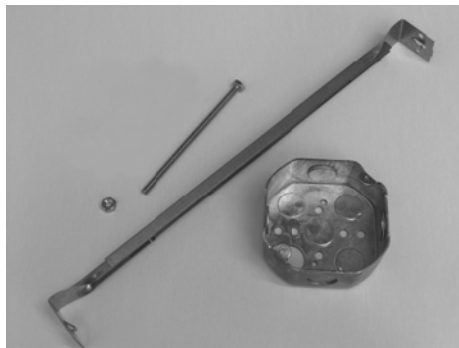
Hardware Kit contains:

- One (1) Fixture Mounting bracket
- Two (2) Thumb Screws



For Installation of off grid fixtures:

- One(1) octagonal J-box
- One(1) ¼-20 threaded rod and nut
- One(1) electrical box hangers



Fixture location off Grid/hard ceiling



1
If using a T-grid ceiling, attach the Caddy/B-line crossbar to the T-grid ceiling as shown. Make sure to tie the crossbar off to the ceiling structure per code.



2
If using a T-grid ceiling, attach the octagonal J-box to the Caddy/B-Line bar as shown. If installing in a hard ceiling mount the j-box to structure. Run conduit to J-box with proper feed wiring for that location.



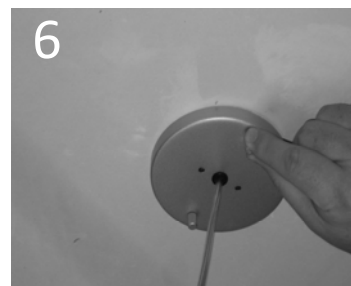
3
Detach mounting plate from canopy by unscrewing thumb screws.



4
To change suspension length, untie strain relief knot from above canopy and retie to desired length.



5
Attach mounting bracket to junction box and make electrical connection.



6
Align the mounting bracket to holes in the fixture and secure fixture to the mounting bracket using the supplied thumb screws.