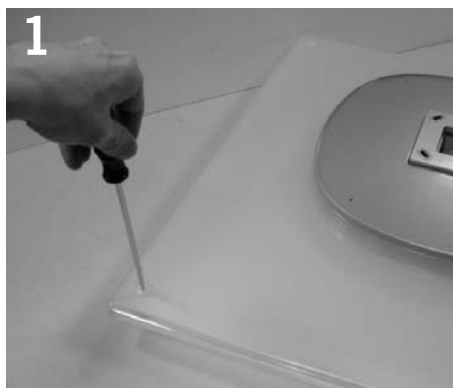


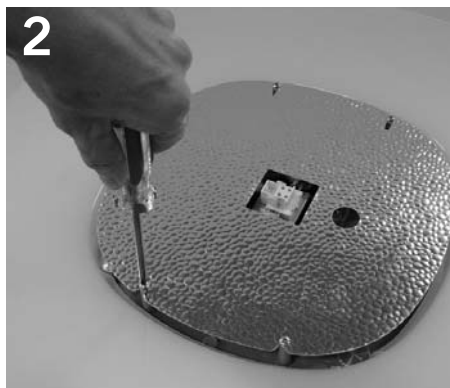
BELLA SURFACE

énergie™

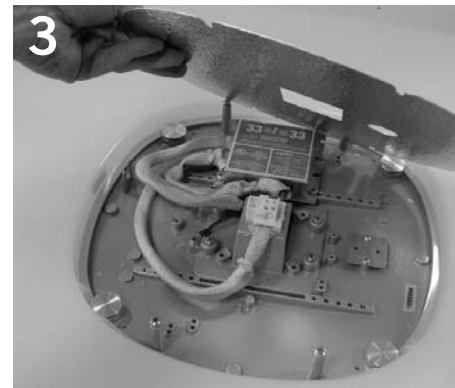
Installation Instructions



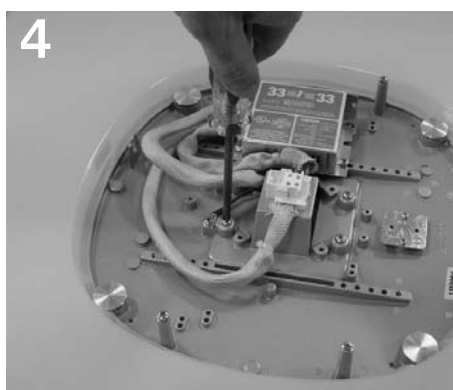
1 Open fixture housing by removing (4) screws at corners of plate side of housing.



2 Loosen (4) reflector retaining screws.



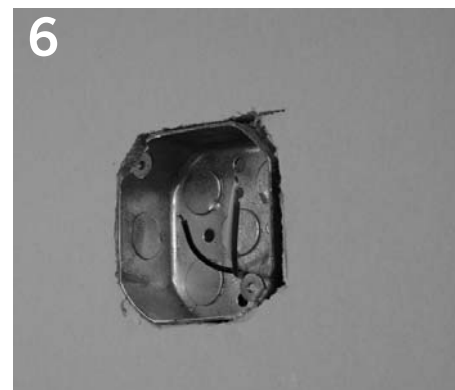
3 Remove reflector by sliding reflector toward long screw slots and lifting.



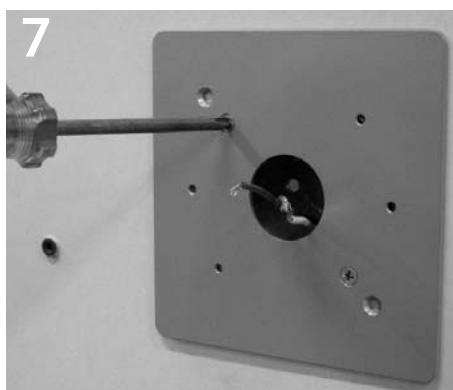
4 Loosen (4) mounting bracket retaining screws.
NOTE: Screws do not need to be removed.



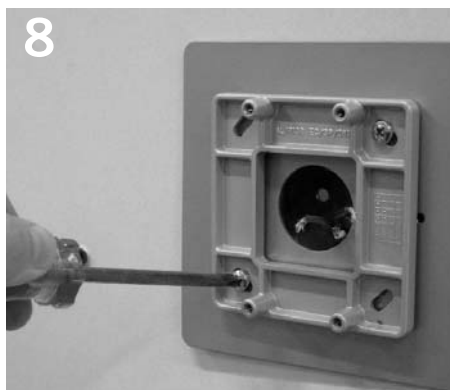
5 Remove mounting bracket.



6 Install 4" octagonal junction box (not provided) into wall or ceiling.



7 Attach mounting plate to junction box using (2) flathead screws provided. Feed supply conductors through center hole.



8 Attach mounting bracket to mounting plate using (2) M5 screws and lock washers provided. Level bracket before tightening.

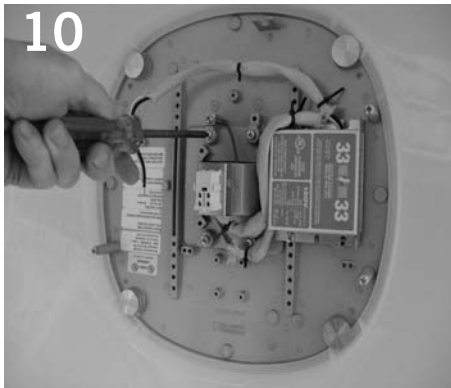


9 Fixture may be installed at 45 degree angle to floor by installing mounting bracket as shown.

Product to be installed by qualified electrician only.

PART # 04040621-01 Rev.A

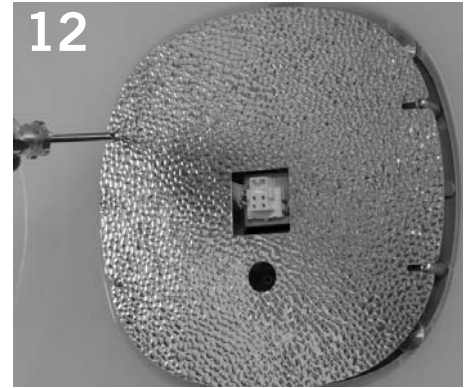
Installation Instructions



10
Position fixture onto mounting plate and tighten (4) screws.



11
Make electrical connection of supply conductors to fixture. Push connections back into junction box. Install splice compartment cover and secure with (2) screws (provided).



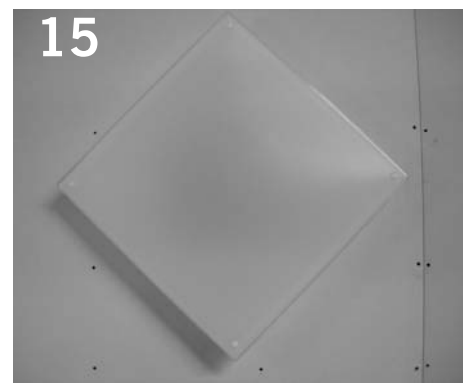
12
Install reflector and tighten reflector retaining screws.



13
Install lamp(s) as directed on relamp label.



14
Attach front diffuser by inserting (4) plastic screws at corners and tighten by hand. If necessary, use small flat-blade screwdriver.



15
Fixture may be oriented at 45 angle to floor. See step #9.

IMPORTANT NOTICE

To clean the plastic parts do not use any organic substances such as solvents, alcohol, alkaline solutions, acids or cleansers containing these substances. Use only neutral soaps and soft cloths.

Product to be installed by qualified electrician only.

PART # 04040626-01 Rev. A