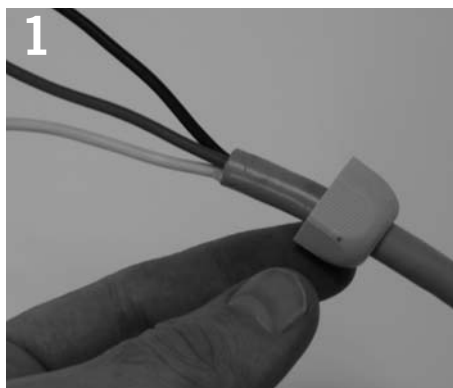


BELLA PENDANT

énergie™

Installation Instructions



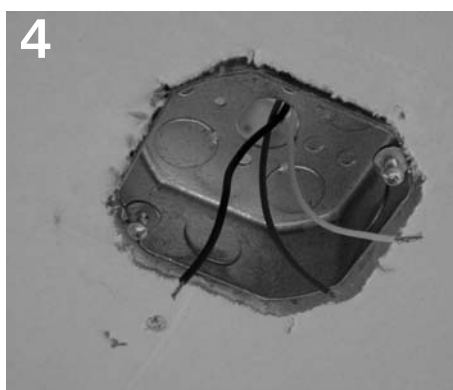
1 Slide securing collar over power cord.



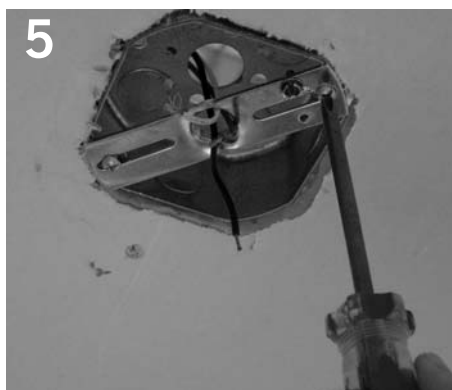
2 Slide compression fitting over power cord.



3 Slide ceiling canopy over power cord.



4 Install 4" octagonal junction box (not provided) into ceiling.



5 Install bracket bar and tighten 2 screws (not provided).



6 Complete electrical connection through center threaded hole in bracket bar.



7 Push electrical connections into junction box through center threaded hole. Insert power cord into center hole.



8 Thread compression fitting into center hole of bracket bar and tighten securely.

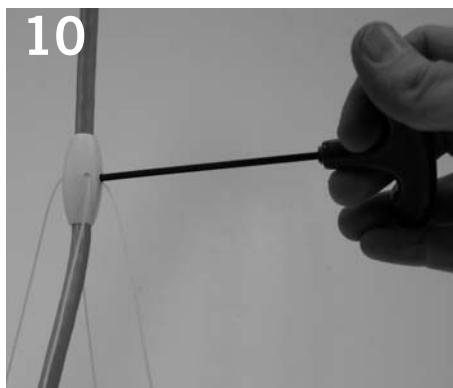


9 Tighten securing collar into compression fitting to secure fixture.

Product to be installed by qualified electrician only.

PART # 04040624-01 Rev.A

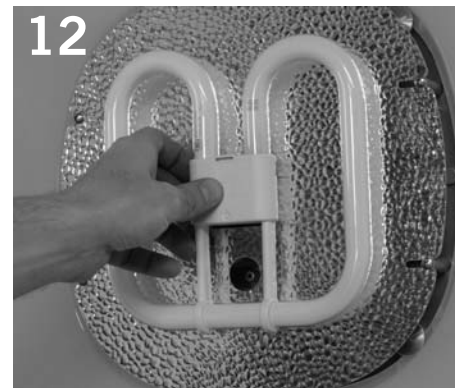
Installation Instructions



10 Adjust and tighten support collar as required to ensure support lines are taut.



11 Remove 4 plastic screws from corners of upper diffuser using flat blade screwdriver. Carefully remove lower diffuser.



12 Install lamp(s) as directed on relamp label.



13 Reattach lower diffuser by inserting 4 plastic screws at corners of upper diffuser and tighten by hand. If necessary, use flat blade screwdriver.



14 Fixture may be positioned at an angle by adjusting inclination in relation to support cables.

IMPORTANT NOTICE

To clean the plastic parts do not use any organic substances such as solvents, alcohol, alkaline solutions, acids or cleansers containing these substances. Use only neutral soaps and soft cloths.

Product to be installed by qualified electrician only.

PART # 04040624-01 Rev. A