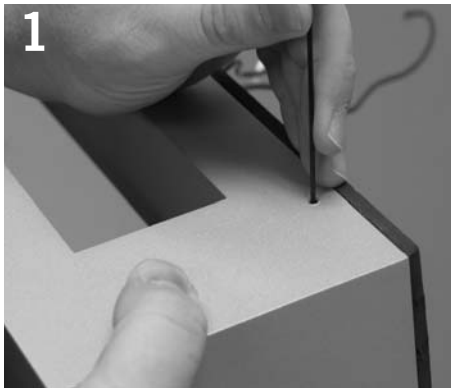


ARTRES SCONCE/ ARTRES LINEAR énergie™

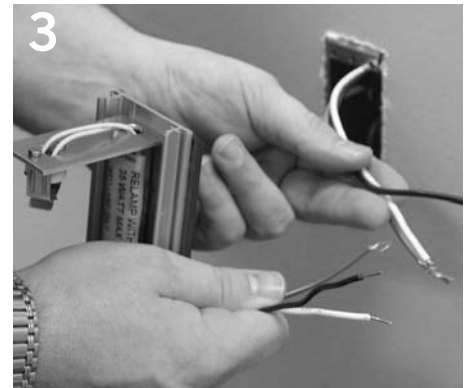
Installation Instructions



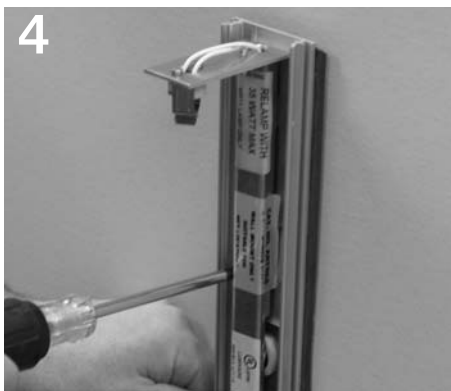
1 Remove housing by loosening set screws with provided allen wrench.



2 Install Energie junction box in proper orientation for the fixture.



3 Make electrical connection.



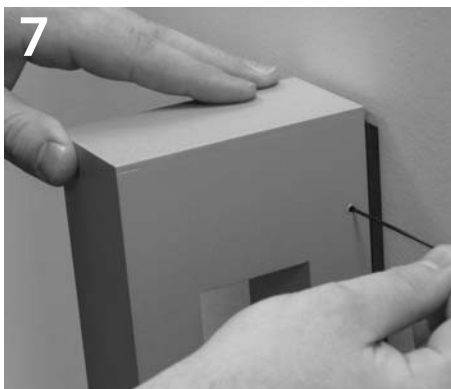
4 Attach mounting plate to junction box using 4 screws. Seal mounting plate to wall surface using silicone caulk around the perimeter of the j-box to create a water-tight seal.



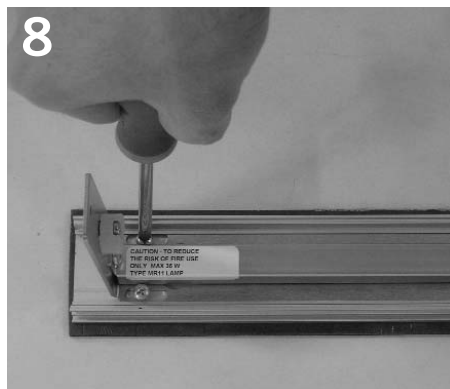
5 Install lamp(s) per relamp label.



6 Slide housing over lamp holder(s) and mounting plate.



7 Secure housing by tightening set screws.



ARL ONLY: Secure mounting plate to wall with (2) screws (not included) at each outer end.

Product to be installed by qualified electrician only.

PART # 05102805-01