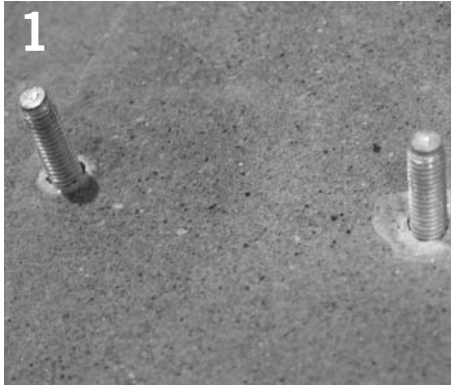


# ARTRES BOLLARD

énergie™

## Installation Instructions



1 Anchor (4) 5/16" studs in mounting surface. For location, see diagram on the second page of this instruction sheet.



2 Slide mounting plate over studs. To level mounting plate, place nuts and washers underneath it if necessary.



3 Secure mounting plate to studs with provided nuts. NOTE: Electrical wires must pass through center hole.



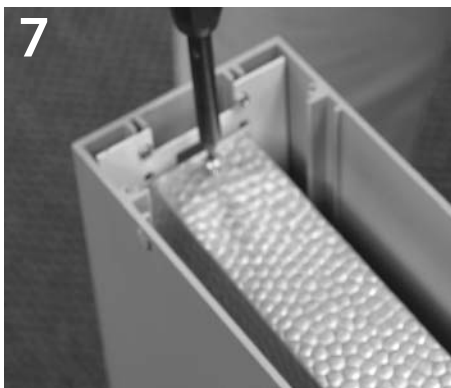
4 Make electrical connection and slide fixture over mounting plate.



5 Secure fixture to mounting plate with provided set screws and water stops.



6 Loosen screws at top of housing to remove coverplate.



7 Remove fixture reflector.



8 Install lamp per relamp label.



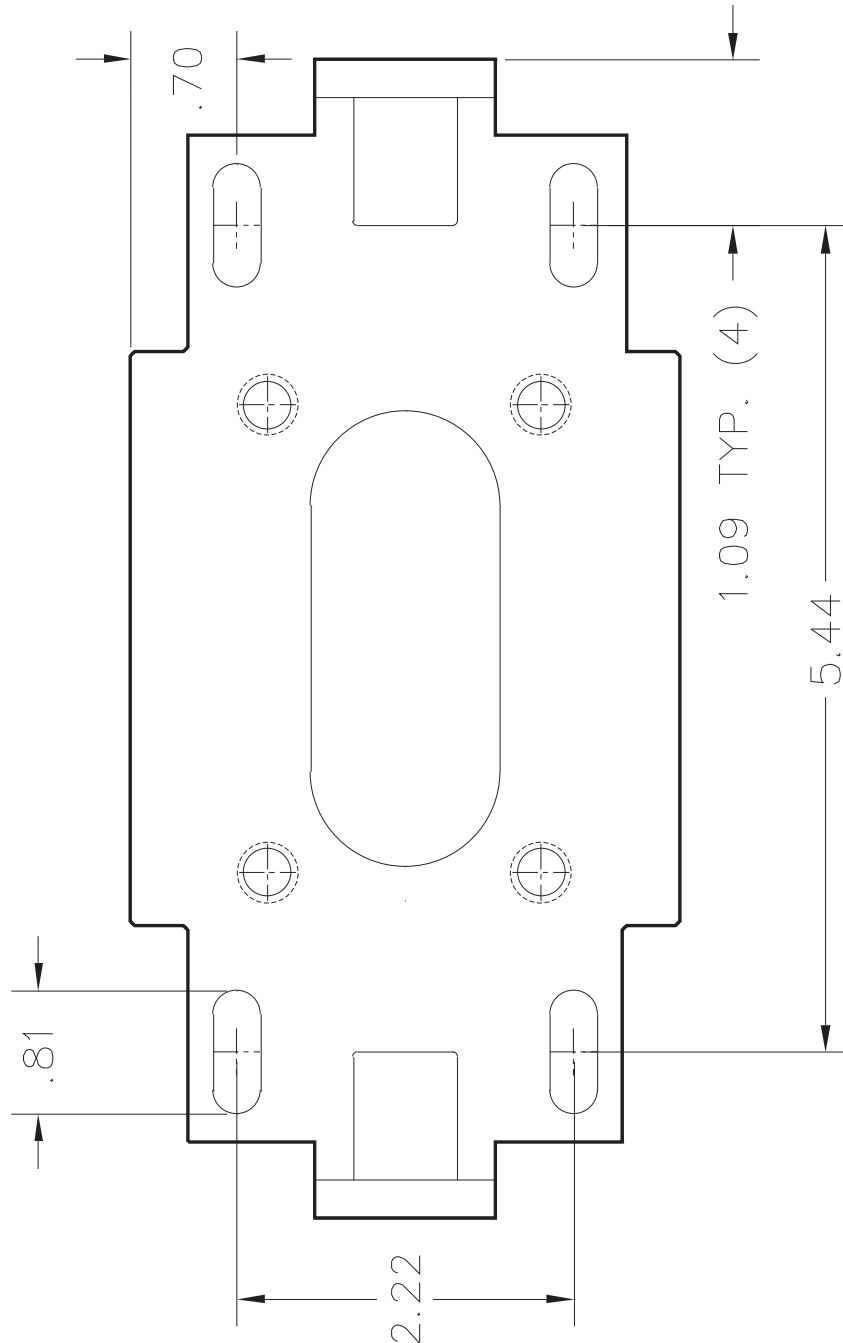
9 Replace reflector and coverplate.

Product to be installed by qualified electrician only.

PART #05102805-02

# ARTRES BOLLARD

## Mounting Plate Diagram (not to scale)



Product to be installed by qualified electrician only.

PART #05102805-02