

INTIMO & MAXIMO

INTIMO | Hotel, Brugge, Belgium | Lighting Design: Multiline | Photograph: Multiline

Énergie • 4885 Ward Road, Suite 300 • Wheat Ridge, CO 80033 • Tel 720 963 8055 • www.energielighting.com

multiline



INTIMO | Consulting Office, Raamsdonksveer, Netherlands | Architect: Marquart Architects | Lighting Design: AteXLight | Photograph: Multiline



INTIMO | Accounting Office, Hasselt, Belgium
Lighting Design: Multiline | Photograph: Multiline



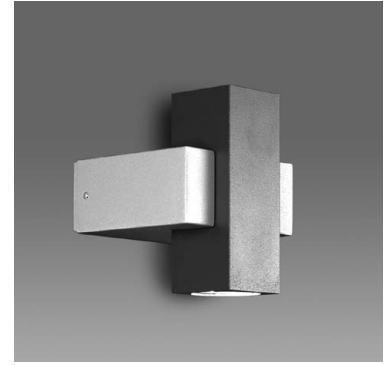
MAXIMO | Riethorst aan de Veste, Geertruidenberg, Netherlands | Architect: Marquart Architects
Lighting Design: AteXLight | Photograph: Multiline

INTIMO and MAXIMO. Angular accord.

INTIMO, from Multiline in Belgium, combines clean angular lines, subtle textures, and elegant proportions to complement virtually any interior or exterior architectural theme.

A direct/indirect luminaire, INTIMO can be easily converted on site to downlight or uplight only. Its larger counterpart, MAXIMO, uses 39W or 70W PAR30 metal halide lamping. Both fixtures can be ordered as an uplight or downlight, as well as the standard up/down configuration.

INTIMO and MAXIMO are weather resistant and **UL/CUL Wet Location Listed**.



INTIMO



MAXIMO

Two sizes. One look.

With their compatible appearance, INTIMO and MAXIMO enable specifiers to use the same vocabulary in various applications on the same project – indoors or outdoors.



INTIMO





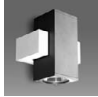
MAXIMO

Product details.

- Rectangular lines complement virtually any design theme
- Two sizes of luminaires enable specifiers to use the same vocabulary in various applications on the same project
- Finishes were developed for exceptional all-weather performance
- INTIMO and MAXIMO can be ordered as uplight/downlight (standard), uplight only, or downlight only
- **UL/CUL Wet Location Listed** (suitable for outdoor use)

CONSTRUCTION	Fixtures are constructed of extruded aluminum with cast-aluminum wall brackets.
FINISH	Body columns are finished in lightly textured charcoal polyester powder coat. Wall brackets are finished in lightly textured gray polyester powder coat. Finish is specially developed for outside exposure and all-weather resistance.
SHIELDING	Lamp openings are protected with gasketed glass lenses.
ELECTRICAL	120V or 277V. Integral electronic transformer or ballast.
MOUNTING	Fixtures are supplied with a custom Énergie junction box that can be shipped ahead of fixtures.

See product specification sheets at www.energielighting.com for complete details.

 WET LOCATION LISTED	 INTIMO	 MAXIMO
Catalog Number Prefix	INT	MAX
Dimmable	Yes*	No
Indirect % / Direct %	50% / 50% (Field convert to uplight or downlight by using 1 lamp)	50% / 50%
Lamp (supplied by others)	1x35W MR 16 Bi Pin GU 5.3 2x35W MR 16 Bi Pin GU 5.3	1x39W Par 30 metal halide med base 1x70W Par 30 metal halide med base 2x39W Par 30 metal halide med base 2x70W Par 30 metal halide med base

*With ELV dimmer only.

Dimensions.

